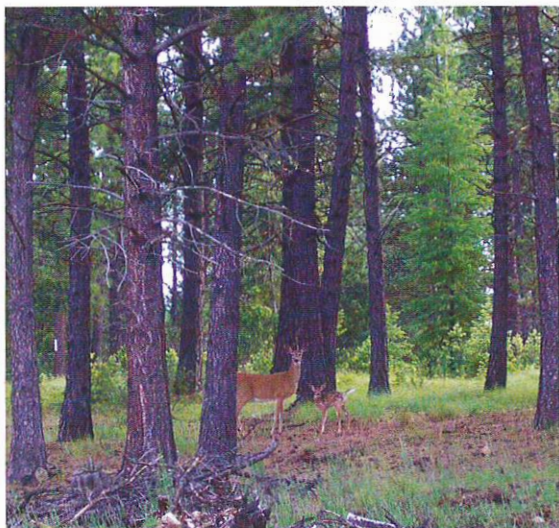


# CALL BEFORE YOU CUT

## A Resource Guide to Forest Management

*Whether it's your back yard or the back forty, assistance is available to help you manage and protect your forest resource*



*Prepared by:*

*Michael Justus, Montana Tree Farm Inspector, DNRC and  
Dr. Peter Kolb, MSU Extension Forestry Specialist*

May 2003

#4459

## Make Informed Decisions

A well-designed and careful timber harvest can help you protect your forest from wildfires, allow it to develop into habitat for wildlife, and grow healthy trees resistant to insect and disease epidemics. On the other hand, a careless harvest can damage the land and future of the forest. Your involvement can ensure that the harvest treatment is beneficial. Use the resources in this brochure to help you make wise decisions with regard to managing your forest. Walk through your woods. Determine what is important to you and how your values might fit to the current attributes of your forest. Ask forestry experts to help you with this task.

## Know Your Woods

Good forest management depends on understanding how a forest ecosystem functions. Different tree species, under-story plants and wildlife all have specific needs. Walk your land, and make a record of what's there and where it is. What kinds and sizes of trees do you see? What wildlife signs do you notice? Note areas of special concern. What do you like, what do you want to enhance?

## Develop Objectives and Alternatives

What are your goals? Do you want some financial return, wildlife habitat, nature appreciation, weed control, or something else? Talk to other landowners for ideas. Enroll in a Forest Stewardship Workshop to learn about forestry practices and develop a management plan. Work with the free assistance of the Tree Farm System or call your DNRC Service Forester to help you meet your long and short-term objectives. Forests can offer income opportunities other than timber sales. Honey, firewood, medicinal plants, and mushrooms are alternative sources of income.



*Careful planning and finding the help you need prior to harvest can make all the difference.*

## Programs and Expert Help

- **Forest Stewardship Educational Workshops** are 40-hour courses designed to help landowners survey and formulate their own forest plans. Additional 1-day courses are also offered to help strengthen your knowledge on specific forestry topics including wildfire protection, management alternatives, forest ecology, weeds, and understory vegetation. Contact Montana State Extension Forestry for details or log onto: [www.forestmontana.com](http://www.forestmontana.com)
- **Montana DNRC Service Foresters.** Site visits to assist you and reinforce your knowledge on timber management, forest health, reforestation, timber sale contracts, best management practices, streamside management zone laws, fire hazard reduction. Financial assistance may be available. (FLEP program).
- **Consulting Foresters (fee involved)**  
Timber sale assistance and administration, timber appraisals, tax information. Contact a DNRC Service Forester for a list.
- **Conservation Districts and Natural Resource and Conservation Service (NRCS)**  
Stream permitting, erosion control, tree thinning, planting, fuels reduction, wildlife habitat, and other technical assistance, financial assistance (EQUIP program). Contact your local office.

- **Montana Tree Farm System** is part of a national network of forest landowners that offers free Sustainable Forestry Initiative certification and site visits and assistance with a forester.

- **Montana Forest Owners Association** is a landowner rights and policy organization that also maintains a free forest products and services exchange web site that also hosts educational information and a calendar of events.

## Have a Plan and Get a Contract

A contract is essential to protect your interests. A Montana DNRC Service Forester or consulting forester can provide sample contracts and tips for selling timber and help you write a document that will ensure your goals are met. Your contract should include all details about the timber sale and cleanup. Consider competitive bids, visit locations of prior jobs, and speak with references.

## Accredited Logging Professionals

The Montana Logging Association's *Accredited Logging Professional (ALP)* program provides education on forestry best management practices and forest stewardship. Accredited loggers complete a comprehensive regimen of continuing education, practice and application that provides improved service to the landowner. Most sawmills and Montana DNRC Service Foresters have lists of Accredited Logging Professionals in your area or visit: [www.logging.org](http://www.logging.org)

## Talk to Your Local Sawmill

Some local mills will help you develop a management plan and provide timber harvest assistance. Check with your local mill to see if this assistance is available.

*~Remember, Call Before You Cut~*

# CALL BEFORE YOU CUT RESOURCE DIRECTORY

---

## Montana DNRC Service Forestry

*On site visits and project cost-share (Forest Lands Enhancement Program - FLEP) [www.dnrc.state.mt.us](http://www.dnrc.state.mt.us)*

Anaconda:	563-6078
Bozeman:	586-5243
Lewistown:	538-7789
Libby:	293-2711
Hamilton:	363-1585
Helena:	458-3500
Kalispell:	751-2241 or 751-2240
Miles City:	232-2034
Missoula:	542-4201
Plains:	826-3851
Swan Lake:	754-2301

## Montana State University Extension Service

*Forest Stewardship workshops for private landowners, foresters, and loggers. Specialty workshops and information to address wildfires, weeds, forest management practices and a variety of other resource needs. (406) 243-2773*

[www.forestmontana.com](http://www.forestmontana.com)

<http://extn.msu.montana.edu>

## USDA Natural Resource Conservation Service

*Technical assistance and cost-share regarding forestry and other conservation practices.  
(Environmental Quality Incentives Program – EQUIP)*

[www.nrcs.usda.gov](http://www.nrcs.usda.gov)

## Montana Tree Farm Program

*Get assistance with your management plan, network with other private forest landowners, receive statewide newsletter, national magazine, and become certified under the Sustainable Forestry Initiative.*

[www.mttreefarm.org](http://www.mttreefarm.org)

## Montana Forest Owners Association

*Works on policy issues to protect landowner interests and rights, develops landowner forums, maintains forest products and services, web exchange site, and calendar of educational events.*

[www.forestmontana.com](http://www.forestmontana.com)

## Montana Logging Association

*Training Accredited loggers to meet your resource needs.*

[www.logging.org](http://www.logging.org)